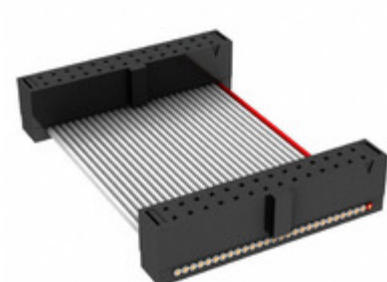


FFSD-14-D-14.00-01-N



Part Number: [FFSD-14-D-14.00-01-N](#)
Manufacturer: [Samtec, Inc.](#)
Description: .050 X .050 C.L. FEMALE IDC ASSE
Data sheet: [FFSD Series Datasheet](#)
[FFSD-xx-x-xx.xx-01-x-x-zzz Drawing](#)

RoHS Status: Lead free / RoHS Compliant
Ship From: Hong Kong
Shipment Way: DHL/Fedex/TNT/UPS/EMS

Images are for reference only.
 See Product Specifications for product details.
 Buy **FFSD-14-D-14.00-01-N** with confidence from
 Component-World.HK, 1 Year Warranty

[Request For Quotation](#)

PRODUCT PARAMETER

Part Number	FFSD-14-D-14.00-01-N	Manufacturer	Samtec, Inc.
Description	.050 X .050 C.L. FEMALE IDC ASSE	Lead Free Status / RoHS Status	Lead free / RoHS Compliant
Quantity Available	8200 pcs	Data sheet	FFSD Series Datasheet FFSD-xx-x-xx.xx-01-x-x-zzz Drawing
Category	Cable Assemblies	Series	*
Manufacturer Standard Lead Time	3 Weeks	Lead Free Status / RoHS Status	Lead free / RoHS Compliant
Detailed Description	Position Cable Assembly Rectangular		

Component-World.com is a Reliable Stocking Distributor of Electronic Components. We specialize in all Samtec, Inc. series electronic components. We have 8200 pieces of Samtec, Inc. FFSD-14-D-14.00-01-N in stock available now. Request a quote from electronics components distributor at Component-World.com, our sales team will contact you within 24 hours.

RFQ Email: info@Components-World.com

RELATED PRODUCTS

	Part#: FFSD-14-D-10.00-01-F-N Description: .050 X .050 C.L. FEMALE IDC ASSE	Manufacturers: Samtec, Inc.	RFQ
	Part#: FFSD-14-D-15.00-01-N Description: .050 X .050 C.L. FEMALE IDC ASSE	Manufacturers: Samtec, Inc.	RFQ
	Part#: FFSD-14-D-10.00-01-N-R Description: .050 X .050 C.L. FEMALE IDC ASSE	Manufacturers: Samtec, Inc.	RFQ
	Part#: FFSD-14-D-16.00-01-F-N-SR Description: .050 X .050 C.L. FEMALE IDC ASSE	Manufacturers: Samtec, Inc.	RFQ
	Part#: FFSD-14-D-16.00-01-N Description: .050 X .050 C.L. FEMALE IDC ASSE	Manufacturers: Samtec, Inc.	RFQ
	Part#: FFSD-14-D-12.00-01-N-R Description: .050 X .050 C.L. FEMALE IDC ASSE	Manufacturers: Samtec, Inc.	RFQ
	Part#: FFSD-14-D-10.00-01-N Description: .050 X .050 C.L. FEMALE IDC ASSE	Manufacturers: Samtec, Inc.	RFQ
	Part#: FFSD-14-D-13.25-01-N Description: .050 X .050 C.L. FEMALE IDC ASSE	Manufacturers: Samtec, Inc.	RFQ
	Part#: FFSD-14-D-18.00-01-N-R Description: .050 X .050 C.L. FEMALE IDC ASSE	Manufacturers: Samtec, Inc.	RFQ
	Part#: FFSD-14-D-12.00-01-N Description: .050 X .050 C.L. FEMALE IDC ASSE	Manufacturers: Samtec, Inc.	RFQ
	Part#: FFSD-14-D-20.00-01-N Description: .050 X .050 C.L. FEMALE IDC ASSE	Manufacturers: Samtec, Inc.	RFQ
	Part#: FFSD-14-D-11.81-01-N Description: .050 X .050 C.L. FEMALE IDC ASSE	Manufacturers: Samtec, Inc.	RFQ
	Part#: FFSD-14-D-22.00-01-N Description: .050 X .050 C.L. FEMALE IDC ASSE	Manufacturers: Samtec, Inc.	RFQ
	Part#: FFSD-14-D-13.80-01-N Description: .050 X .050 C.L. FEMALE IDC ASSE	Manufacturers: Samtec, Inc.	RFQ
	Part#: FFSD-14-D-15.51-01-N Description: .050 X .050 C.L. FEMALE IDC ASSE	Manufacturers: Samtec, Inc.	RFQ
	Part#: FFSD-14-D-19.69-01-N-D03.54 Description: .050 X .050 C.L. FEMALE IDC ASSE	Manufacturers: Samtec, Inc.	RFQ
	Part#: FFSD-14-D-09.90-01-N Description: .050 X .050 C.L. FEMALE IDC ASSE	Manufacturers: Samtec, Inc.	RFQ
	Part#: FFSD-14-D-20.00-01-N-R Description: .050 X .050 C.L. FEMALE IDC ASSE	Manufacturers: Samtec, Inc.	RFQ
	Part#: FFSD-14-D-12.70-01-N-D03.49 Description: .050 X .050 C.L. FEMALE IDC ASSE	Manufacturers: Samtec, Inc.	RFQ
	Part#: FFSD-14-D-18.00-01-N Description: .050 X .050 C.L. FEMALE IDC ASSE	Manufacturers: Samtec, Inc.	RFQ

Related keywords for FFSD-14-D-14.00-01-N

Samtec, Inc. FFSD-14-D-14.00-01-N	FFSD-14-D-14.00-01-N distributor	FFSD-14-D-14.00-01-N supplier	FFSD-14-D-14.00-01-N price
FFSD-14-D-14.00-01-N download datasheet	FFSD-14-D-14.00-01-N datasheet	FFSD-14-D-14.00-01-N stock	buy FFSD-14-D-14.00-01-N
Samtec, Inc. FFSD-14-D-14.00-01-N	Samtec Inc. FFSD-14-D-14.00-01-N		